

# Bramble Hall

Bramble Hill, Balcombe, West Sussex RH17 6HR



Contact: Charlotte Jim

01444 811833

[parish.clerk@btconnect.com](mailto:parish.clerk@btconnect.com)

## About the Hall

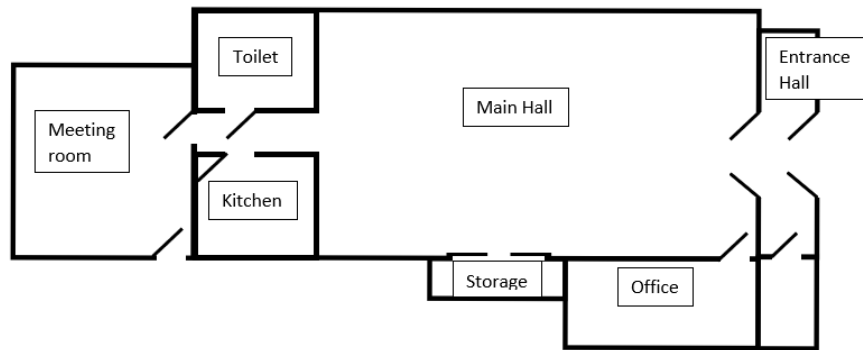
Bramble Hall is a multi-functional, meeting space with a dramatic vaulted ceiling. Free Wi-Fi was installed in February 2022.

It provides a delightfully light and airy environment suited to clubs and societies, exercise classes, craft workshops and private parties. There is seating for up to 60 people (rows) and 50 (with tables).

In addition to this there is a well-equipped kitchen with cooker and instant hot water, and a further room which is ideally suited to smaller groups or for laying out buffet food etc.

The hall also benefits from level access and a disabled toilet. There is some storage space for regular users.

## Hall Layout



## Kitchen

The kitchen may be used for preparing and serving light refreshments, hot and cold drinks, etc. It has a cooker, sink, refrigerator (in the meeting room), and a hot-water urn. A hatch gives access to the main Hall. Cutlery and crockery are also available.

## Tables and chairs

There are 14 6ft trestle tables and approximately 60 chairs. These are kept in the storeroom to the side of the main hall and in the rear meeting room; if used they please ensure they are returned to this storage.

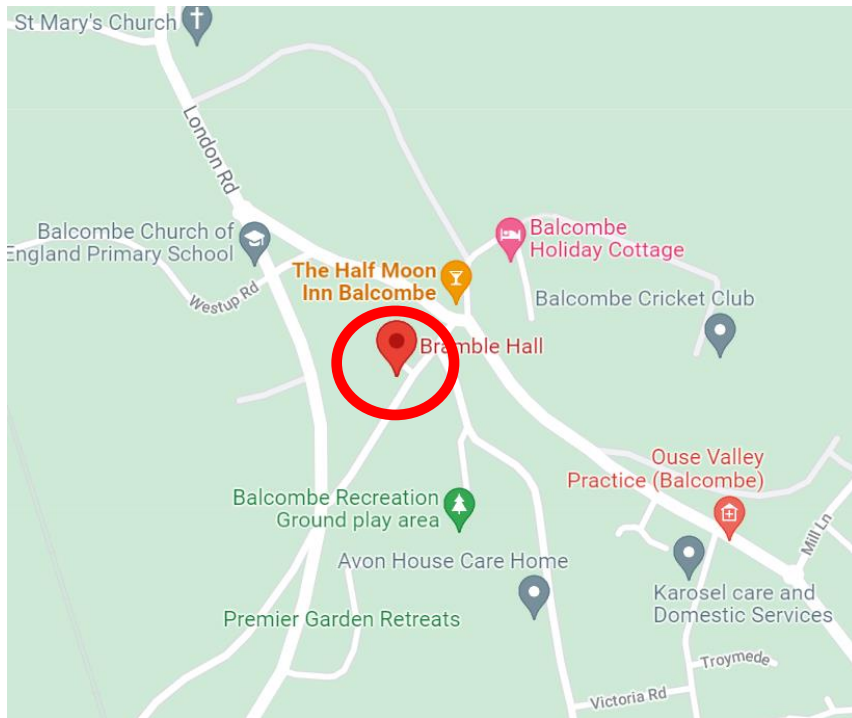
## Toilets

There is one unisex disabled toilet situated off the central lobby.

## Car parking

There is no car parking although parking is available in the neighbouring roads.

## Location



## Hire Fee

The fee for hiring the building is £12.00 per hour, with a minimum hire period of 2 hours. The hire fee is paid in full at the time a hire agreement is signed.

## Alcohol

If you intend to sell alcohol at your event in our Village Hall you will require a Temporary Event Notice (TEN) which can be obtained, on application, from Mid Sussex Council. Click here for more information.

<https://www.midsussex.gov.uk/licensing-business/temporary-event-notice/>